

## 2025 Helly Hansen Sailing World Regatta Series St. Petersburg Berthing/Hauling & Logistics

### **Vehicle Parking in Downtown St Petersburg**

No parking available from Wednesday - Monday at SPYC or SPYC Sailing Center

Parking Lot Map: [Al Lang Stadium](#)\* [South Core Parking Garage](#), [McNulty Garage](#), [Sundial Garage](#)

\*Al Lang Stadium is not available on Saturday, February 15; Note all parking restrictions

\*\*No tolerance for camping or staying overnight in vehicle in downtown St Petersburg

**All visiting boats and trailers must obtain docking information and trailer tags from the SPYC Waterfront Director. All arrangements must be coordinated in advance per the NOR.**

### **SPYC Sailing Center - 250 2<sup>nd</sup> Ave SE, St Petersburg**

#### **SPYC Docks - Entrance across from main clubhouse**

Wednesday, February 12 - Sunday, February 16

Launching: Keelboats using a 2-ton and 3-ton crane for launching purposes

The Lightning Fleet will launch & haul daily from SPYC Sailing Center

Docking: Contact Dockmaster per NOR 13 for docking assignments

\*Only pre-approved Trailers may park at the Sailing Center

\*\*All boats/trailers must be removed from the Sailing Center by 6:00pm Monday, February 17

**Contact SPYC Waterfront Director for local marina to large larger keelboats**

### **Elva Rouse Park - 901 North Shore Drive NE, St Petersburg**

Wednesday, February 12 - Sunday, February 16

**Classes**: A-Cat, Melges 15, Windmills & Weta

*Overnight security provided - property left is at the owner's risk*

\*No overnight parking or camping - Competitors may be DSQ'd if reported

### **Derby Lane - 10490 Gandy Blvd N, St. Petersburg**

Wednesday, February 12 - Monday, February 17

**Classes**: All Class trailers for storage

\*Advance [Registration](#) & parking tag required. Space is limited.

### **SPYC Sailing Center Haul Out - 250 2<sup>nd</sup> Ave SE, St Petersburg**

Sunday, February 16

Staging: No earlier than 7:30am Sunday, only trailers attached to vehicles allowed on Northbound Lanes of Bayshore Drive (see map). *Vehicles only may be towed.*

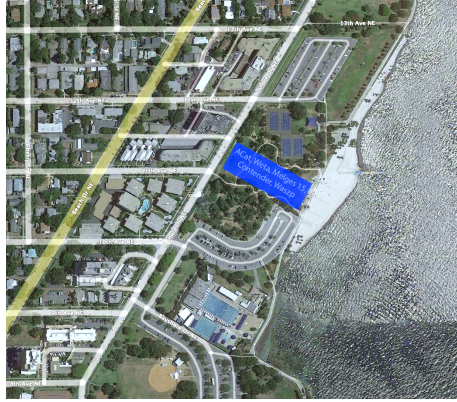
Dockside: One crew to report to vehicle and trailer for the active lineup

Washdown/De-rig: After haul out, move boat/trailer to Sailing Center parking lot

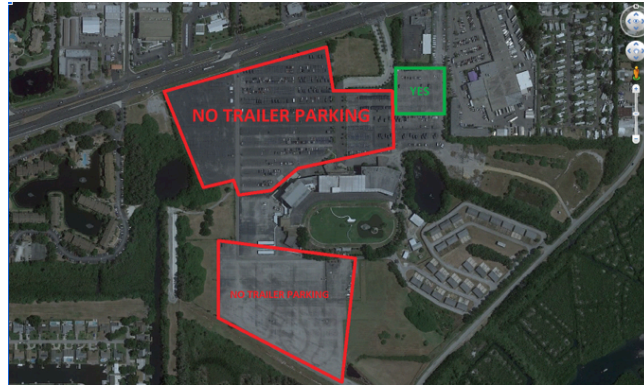
Extra time: Parking for boat/trailer with rig down may park on Bayshore Drive until 6pm

# St. Petersburg Berthing/Hauling & Logistics Relevant Diagrams and Maps

**Elva Rouse Park (Beach launching)**



**Derby Lane (trailer parking)**



## Haul Out Directions - Sunday, February 16



## St. Petersburg Yacht Club Marina & Sailing Areas Local Knowledge & Hazards

Teams should be aware of two shallow areas they may encounter.

Caution: The area southwest of the T-Dock at the Sailing Center



Caution: Area north of the Pier

